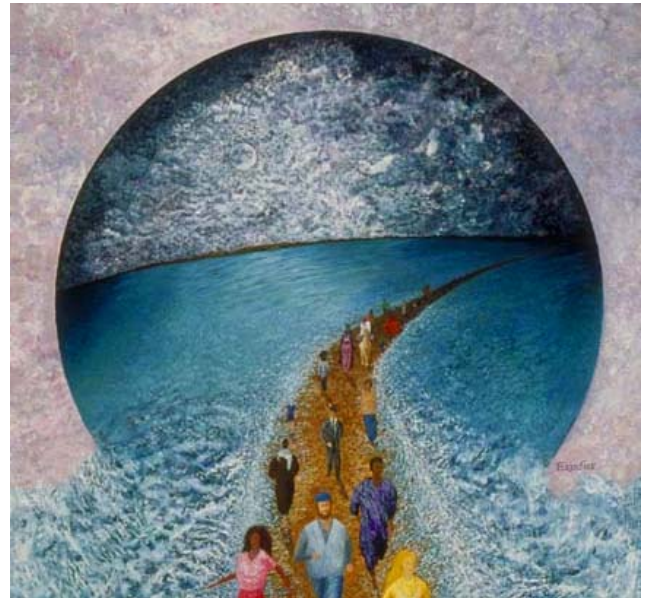


# THE FOUR FREEDOMS PENINSULA FREEDOM SEDER 2012



*"Proclaim Liberty throughout all the land unto all the inhabitants thereof"*  
Leviticus 25:10

**THURSDAY, MARCH 29, 2012**  
**5:45 PM Reception ~ 6:15 PM Seder**  
**Peninsula Temple Sholom**  
**1655 Sebastian Drive, Burlingame**

## **Seder Co-leaders**

Rabbis Daniel Feder & Rebekah Stern

*Peninsula Temple Sholom*

Reverend Paul Watermulder

*First Presbyterian Church of Burlingame*

Music led by Cantor Barry Reich

*Peninsula Temple Sholom*

## **Cost is \$20 per person**

*A full Kosher vegetarian Seder meal will be served.*

*No one will be turned away due to an inability to pay.*

## **Be a sponsor!**

*\$100 includes 2 tickets and acknowledgment in the program.*

## **How to register**

- Contact JCRC: [kstiller@jcrc.org](mailto:kstiller@jcrc.org) or 650-847-1715
- Online with credit card:  
[www.jcrc.org/commout\\_ccevents.htm](http://www.jcrc.org/commout_ccevents.htm)
- Send a check, including names of attendees, to:  
JCRC, 3921 Fabian Way, Palo Alto, CA 94303

A Seder, which Jews all over the world hold each year at Passover, tells the story of the Jewish liberation and Exodus from slavery in Egypt. Our multicultural Freedom Seder is a Passover Seder that also examines the status of Freedom in our modern world. This year, we are focusing on the "Four Freedoms":

On January 6, 1941, President Franklin D. Roosevelt gave a seminal speech in which he proposed four fundamental freedoms that people "everywhere in the world" ought to enjoy:

*Freedom of speech and expression*  
*Freedom of worship*  
*Freedom from want*  
*Freedom from fear*

At our Freedom Seder, we will ask: Have we achieved these four freedoms? What do different faith traditions tell us about these four freedoms? What can we do to realize this dream?

***Join us for an inspiring evening!***  
**SPACE IS LIMITED.... RSVP by 3/15/12!**

*Co-sponsors: Jewish Community Relations Council,  
Peninsula Temple Sholom, First Presbyterian Church of  
Burlingame, Congregation Beth Am, Congregation Beth Jacob,  
Peninsula Sinai Congregation, Peninsula Temple Beth El*



PENINSULA TEMPLE SHOLOM  
BURLINGAME, CALIFORNIA



First Presbyterian Church of Burlingame